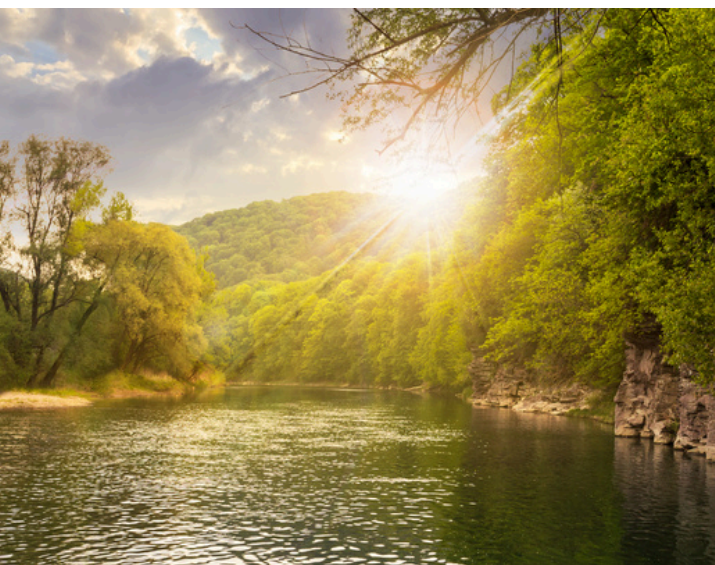
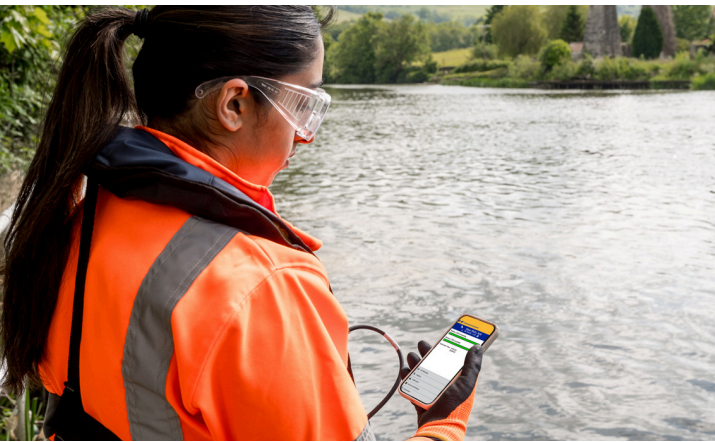


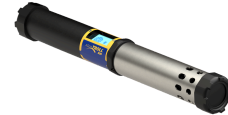
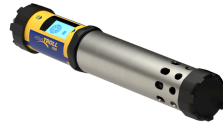
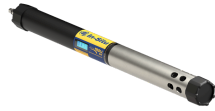


 **In-Situ**
Water Quality Monitoring



Aqua TROLL® Multiparameter Sondes

Our five- and seven-port multiparameter sondes come with interlocking, interchangeable sensors and an optional antifouling wiper. All are available with an optional vented or non-vented pressure sensor.



Aqua TROLL 500

5-port sonde
4 sensors + wiper

Up to 100 m (325 ft)
deployment depth

Aqua TROLL 600

5-port sonde
4 sensors + wiper

Up to 200 m (650 ft)
deployment depth

Internal logging

Internally powered

Aqua TROLL 700

7-port sonde
6 sensors + wiper

Up to 250 m (820 ft)
deployment depth

Aqua TROLL 800

7-port sonde
6 sensors + wiper

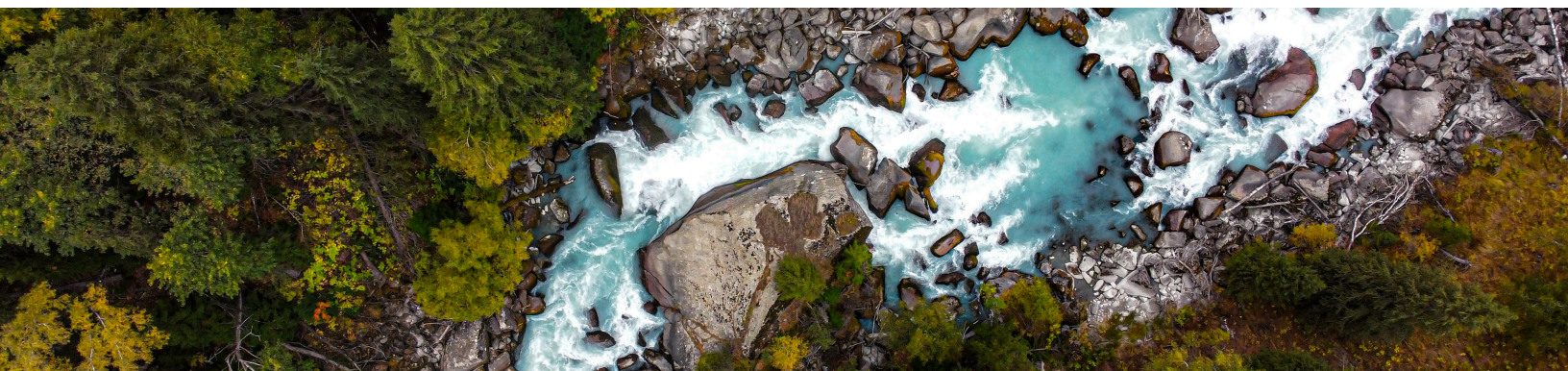
Up to 250 m (820 ft)
deployment depth

Internal logging

Internally powered

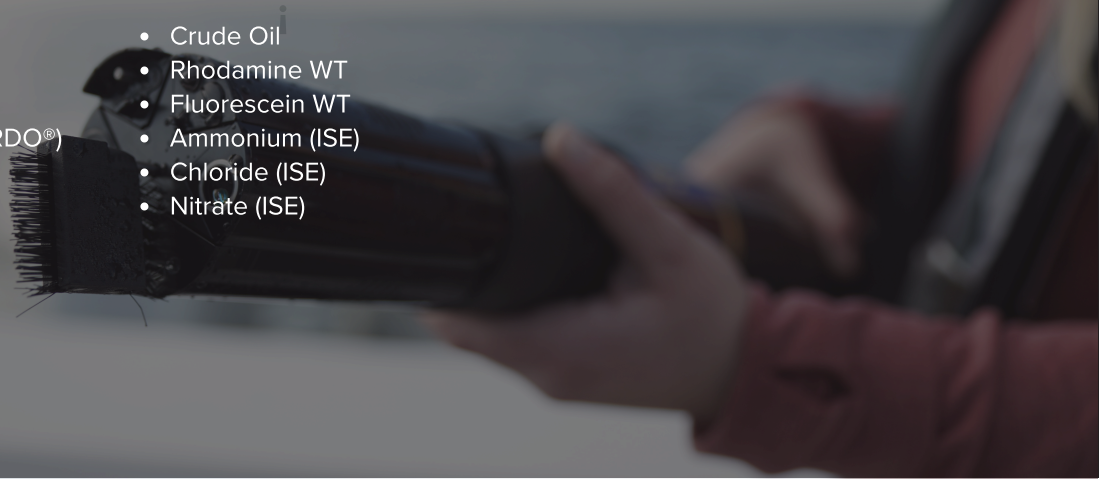
Features

- Simplified user experience
- Antifouling by Design
- Built-in error prevention
- Wide range of parameters available
- A mini calibration cup onboard saves time and money
- Flexible output options include Modbus/RS-485, SDI-12, and Bluetooth. No adapters are required



Customize your Aqua TROLL 500, 600, 700 or 800 with these sensor options:

- Temperature
- Conductivity
- pH/ORP
- Rugged Dissolved Oxygen (RDO®)
- Turbidity
- Chlorophyll a
- Phycocyanin (BGA-PC)
- Phycoerythrin (BGA-PE)
- FDOM
- Crude Oil
- Rhodamine WT
- Fluorescein WT
- Ammonium (ISE)
- Chloride (ISE)
- Nitrate (ISE)



Aqua TROLL 400 Multiparameter Probe

This durable, low-maintenance probe is designed for months of unattended operation in harsh conditions. 3D factory calibration and field-tested sensor technologies ensure stable, accurate results, while flexible communication protocols (4–20 mA, SDI-12, RS-485) enable easy data access.

Measures and records

- Conductivity
- Dissolved oxygen (optical RDO®)
- pH/ORP
- Temperature
- Water level and water pressure (absolute)

CTD Instruments

Sub-1-inch design fits any deployment. Titanium construction prevents corrosion. 3D factory calibration ensures full-range sensor accuracy. And dynamic density compensation collects accurate water level data in environments where salinity may vary. Available in flexible communication protocols (4–20mA, SDI-12, RS-485).



Aqua TROLL 100

Measures and records conductivity and temperature.



Aqua TROLL 200

Measures and records conductivity, temperature, water level, and pressure.

RDO® Instruments

Rugged construction and the most abrasion-resistant sensor cap on the market, for accurate data and extended life. The RDO Smart Sensor Cap stores calibration coefficients for automatic, uncomplicated setup - simply install the cap, calibrate, and begin collecting data.



RDO Trio

Dissolved Oxygen (DO)
Temperature
Conductivity

Modbus RS-485

Twist-lock connection

Intelligent Wiper and
Copper Guard



RDO Blue

Dissolved Oxygen (DO)
Temperature

Modbus RS-485

Fixed cable lengths:

- Twist-lock connector
- Stripped-and-tinned wires



RDO Pro-X

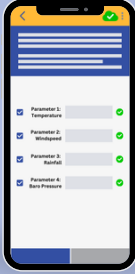
Dissolved Oxygen (DO)
Temperature

Modbus RS-485
SDI-12
4-20 mA output

- Integrated cable with stripped-and-tinned wires
- Twist-lock connector option

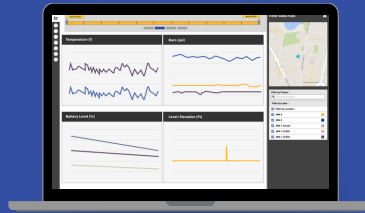
Connected

Instrumentation and software all work together, so you can put your resources where they're needed and spend time with your data, not your equipment.



VuSitu® Mobile App

Intuitive app for iOS and Android provides guided setup tools and instant cloud uploads to HydroVu for automatic, secure data storage.



HydroVu® Data Services

Secure cloud platform offers network-wide visibility, customizable alarms, and simplified data access and management.



Accessories

Universal cables and connectors support multiple applications and deployment configurations.



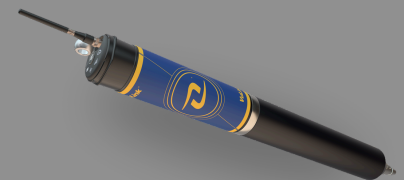
Instrumentation

Rugged, reliable instrumentation is quick to set up and deploy, and easy to maintain.



TROLL® Com PLUS

Bluetooth® connectivity streamlines field data access, enabling live graphing and data visualization features with VuSitu.



VuLink® Telemetry

One-touch activation offers seamless setup for access to real-time data from virtually anywhere.

Applications

Rugged, reliable instrumentation, telemetry and software simplify water level monitoring in a range of applications.

- Surface Water
- Profiling
- Groundwater
- Mining and Industrial
- CTD Monitoring
- Aquifer Characterization
- River and Lake Stage
- Saltwater Intrusion
- Dredging
- Remediation
- Stormwater
- Low-Flow Sampling
- Flood Warning
- Tide Gauging
- Stream Gaging
- Effluent

In-Situ

221 E. Lincoln Ave.,
Fort Collins, CO 80524

1-800-446-7488 (toll free in U.S. and Canada)
1-970-498-1500 (U.S. and International)

In-Situ Support

Reliable equipment is just the beginning. Our knowledgeable technical support and service teams provide timely assistance to ensure peak performance in the field.



in-situ.com/support

OEM Solutions and Partnerships

In-Situ partners with leading companies on innovative solutions for DO monitoring in a wide range of applications such as laboratory applications, semi-conductor process monitoring, aquatic transport, and more. If you are looking for cutting-edge optical DO technology, learn more about In-Situ's OEM turn-key and customized solutions.



in-situ.com/oem

water
simplified.